



A-80 TWIN VALVE

Quarter-turn angle ball valves with 2 independent outlet for surface mounting where the connection is made by threaded ends.

- VITAQ system, more life, less lime at higher temperatures.
- Without reducing flow, it prolongs comfort at service points.
- European Brass, DW (4MS) quality for use in drinking water installations.
- Two independent outlets in one compact valve.
- A single handle for 4 different positions.
- Each position is marked with a "click" sound.
- The handle allows clockwise or counterclockwise rotation.
- The knurled inlet thread make it easy to apply the sealant.
- 100% valves are tested for inner leakage.
- Strong one-piece body construction for secure installations.
- Double o-ring.



TECHNICAL SHEET A-80 TWIN VALVE

PRODUCT DESCRIPTION

Quarter-turn angle ball valves with manual operation, one inlet and two independent outlet in a single body for surface mounting.

These valves allow the water supply to be cut off independently to each of the elements connected to their outlets. They provide the following advantages over traditional installations:

- More than 80% reduction in installation time.
- Reduction in the number of accessories.
- Reduction of installation space.
- Increased installation reliability.

VITAQ system increase the valve life span and flow comfort in hard water areas.

PRODUCT SCOPE

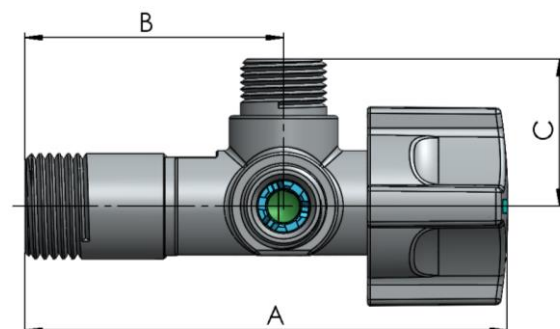
Designed for indoor plumbing installations, allowing individual shut-off of the water supply to sinks, washbasins, cisterns, and other points of use.

These valves are applicable to both new and existing installations.

GENERAL DIMENSIONS, PRESSURE AND TEMPERATURE

TWIN ABS HANDLE

Code	Size	A (mm)	B (mm)	C (mm)	PN (BAR)	Temp. (°C)
CQ4102	1/2X3/8X3/8	93	50	29	16	0 to 95
CQ4105	1/2X1/2X1/2	93	50	30	16	0 to 95
CQ410501	1/2X1/2X1/2	93	50	30	16	0 to 95





TWIN ABS HANDLE WITH DOUBLE CHECK VALVE

Code	Size	A (mm)	B (mm)	C (mm)	PN (BAR)	Temp. (°C)
CQ4103	1/2X3/8X3/8	93	50	29	16	0 to 95
CQ410302	1/2X3/8X3/8	93	50	29	16	0 to 95

TWIN ABS HANDLE WITH DOUBLE OUTLET 3/4

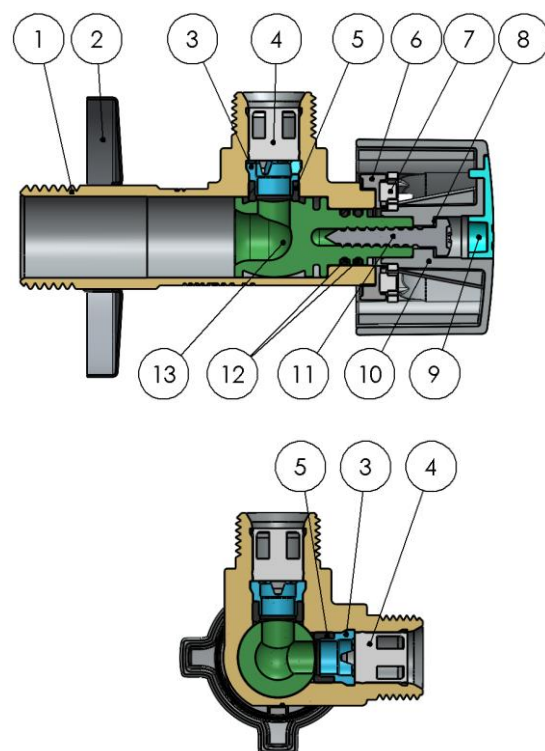
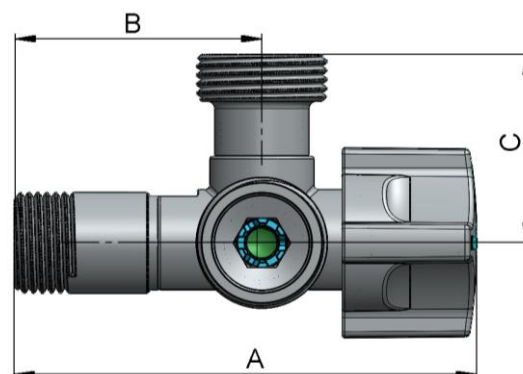
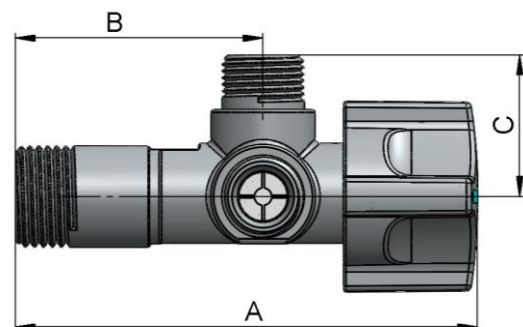
Code	Size	A (mm)	B (mm)	C (mm)	PN (BAR)	Temp. (°C)
CQ4107	1/2X3/4X3/4	93	50	38	16	0 to 95
CQ410701	1/2X3/4X3/4	93	50	38	16	0 to 95

MATERIALS

MODELS CQ4102, CQ4103, CQ410302, CQ4105 & CQ410501

Item	Component	Material	Finishing
1	Body	Brass CW617N	Chrome plated
2	Rosette	Stainless steel	Chrome plated
3	Supporting clip	POM	-
4	* Check valve	POM & Inox	-
5	Seat	EPDM	-
6	Fixed washer	POM	-
7	Loose washer	POM	-
8	Washer	Stainless steel	-
9	Index	ABS	VITAQ
10	Handle	ABS + PC	Chrome plated
11	Screw	Stainless steel	-
12	O-ring	EPDM	-
13	Stem-ball	Anti-lime polymer	VITAQ

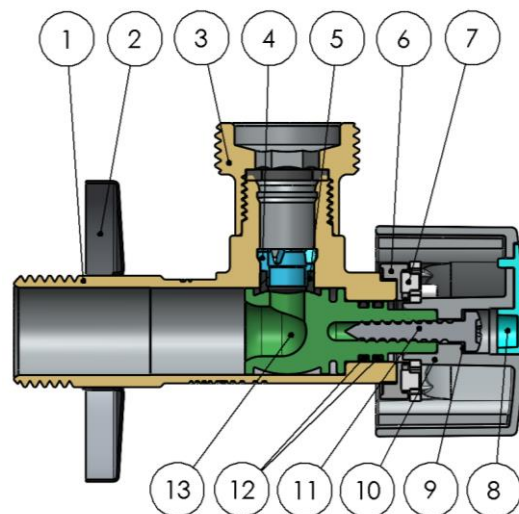
* Only in models CQ4103 and CQ410302.





MODEL CQ4107

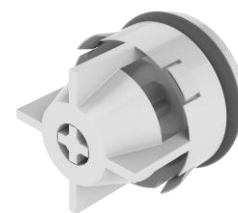
Item	Component	Material	Finishing
1	Body	Brass CW617N	Chrome plated
2	Rosette	Stainless steel	Chrome plated
3	Adapter	Brass CW614N	Chrome plated
4	Supporting clip	POM	-
5	Seat	EPDM	-
6	Fixed washer	POM	-
7	Loose washer	POM	-
8	Index	ABS	VITAQ
9	Washer	Stainless steel	-
10	Handle	ABS + PC	Chrome plated
11	Screw	Stainless steel	-
12	O-rings	EPDM	-
13	Stem-ball	Anti-lime polymer	VITAQ



BUILT-IN CHECK VALVE

Some models in the A-80 TWIN series incorporate a check valve at each of the valve's two outlets, to prevent backflow of downstream connected devices, resulting in a safer installation.

These devices comply with the EN 1717 standard and correspond to EB protection.



OPERATING MODES

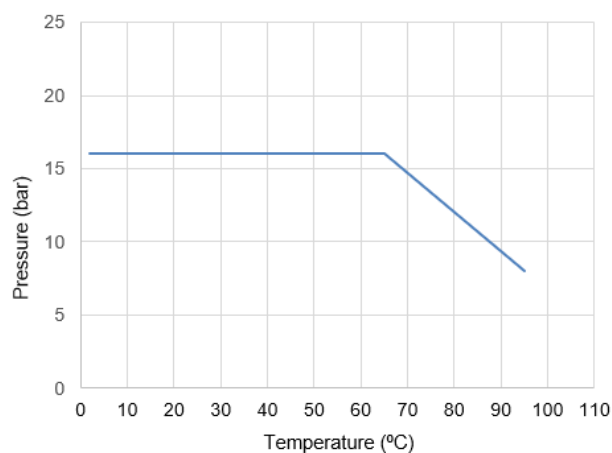
These valves support 4 operating modes as they have independent outlets. The handle indicator shows at each position which outlet is open or closed, when the end of the indicator coincides with an outlet it indicates open position, otherwise closed.





TECHNICAL DATA

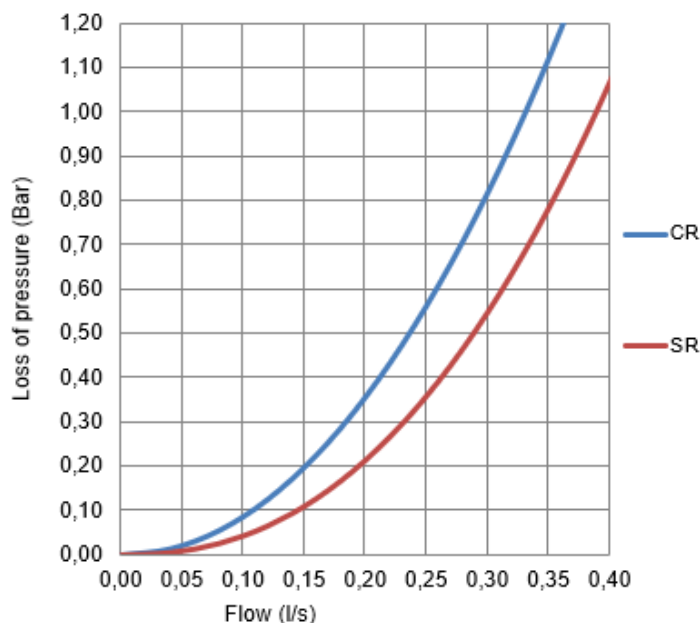
Pressure vs. temperature



Temperature range excludes freezing.

Hydraulic features.

Flow vs. loss of pressure.



Compatibility with fluids

Fluid	Compatibility
Drinking water and domestic hot water	Excellent

For any other fluid, please contact Arco technical service.

Size	With check valve	Without check valve
Kv	1,19	1,40

Kv (m³/h), cubic meters per hour that flow through the valve generating a loss of 1 bar pressure.

INSTALLATION AND OPERATION INSTRUCTIONS

Before performing any action, the water supply to the installation should be shut off. Make sure there is no dirt or foreign objects in the connection to the network. Apply the appropriate sealing material to the inlet thread of the valve. The valve should be installed with a suitable tool, preferably with a wrench to hold the body. The tool should act on the flat surfaces of the valve body to avoid deforming this area due to excessive pressure from the tool. Restore the water supply and check the tightness of all connections before fixing the valve to service.

Do not alter the assembly of the valve components; replacement or disassembly of the handle may cause external leaks. Quarter-turn valves should always operate in a fully open position.



All products have an environmental impact during its life cycle, even once retired. All the components of this product can be recycled. Once the use is over, leave the valve in any recycling green point. Válvulas Arco reserves the right to change the product or any of its technical specifications without prior notice.

FT01080ING – Edition 2024-12