



EXTERNAL NUT BRASS FITTING

Brass fittings for PE installations where connected by tube insertion.

- European brass in DW quality (4MS) approved for use in drinking water applications.
- Indoor and outdoor plumbing installations.
- Robust construction and safe installations.
- Metal compression bicone.
- Graphited threads for better sealant fixation.
- Brass color finish.
- O-ring, ensures external tightness.
- Fittings designed for Polyethylene (PE) pipes types PE40 to PE110 and PN16.



TECHNICAL SHEET EXTERNAL NUT BRASS FITTING

PRODUCT DESCRIPTION

Brass fittings for polystyrene pipe installations where the connection is made by inserting the tube.

PRODUCT SCOPE

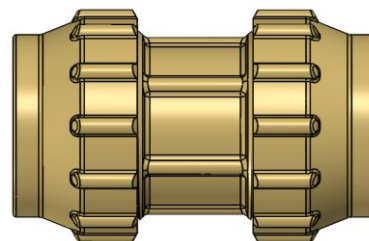
Brass fittings for Polyethylene (PE) pipes are suitable for their design and materials for use in:

- Drinking water distribution networks.
- Connections to indoor installations.
- Distribution facilities.

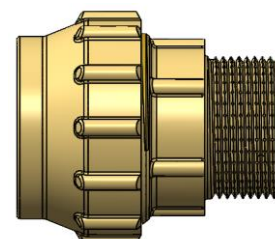
And, in general, to all those applications in which PE pipes and brass fittings are used for them, in accordance with the service conditions specified in this document.

GENERAL DIMENSIONS

Code	Size	PN (BAR)	Temp Range. (°C)*
46020	20 X 20	16	0 to 65
46025	25 X 25	16	0 to 65
46032	32 X 32	16	0 to 65
46040	40 X 40	16	0 to 65
46050	50 X 50	16	0 to 65
46063	63 X 63	16	0 to 65



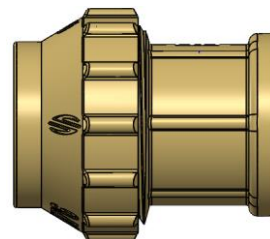
Code	Size	PN (BAR)	Temp Range. (°C)*
45020	1/2M X 20	16	0 to 65
45025	3/4M X 25	16	0 to 65
45032	1M X 32	16	0 to 65
45040	1 1/4M X 40	16	0 to 65
45050	1 1/2M X 50	16	0 to 65
45063	2M X 63	16	0 to 65



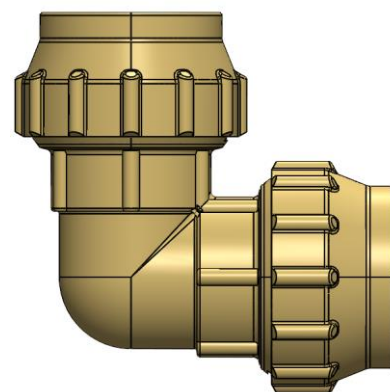
- Freezing is excluded



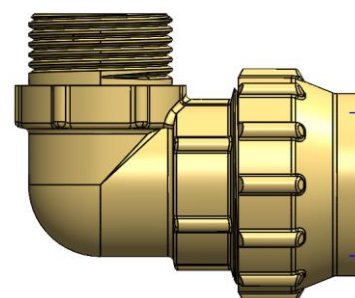
Code	Size	PN (BAR)	Temp Range. (°C)*
44020	1/2F X 20	16	0 to 65
44025	3/4F X 25	16	0 to 65
44032	1F X 32	16	0 to 65
44040	1 1/4F X 40	16	0 to 65
44050	1 1/2F X 50	16	0 to 65
44063	2F X 63	16	0 to 65



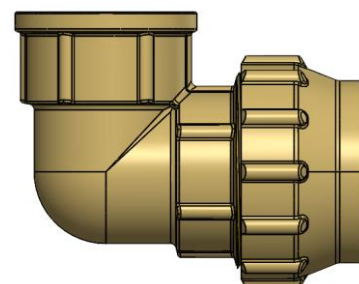
Code	Size	PN (BAR)	Temp Range. (°C)*
47020	20 X 20	16	0 to 65
47025	25 X 25	16	0 to 65
47032	32 X 32	16	0 to 65
47040	40 X 40	16	0 to 65
47050	50 X 50	16	0 to 65
47063	63 X 63	16	0 to 65



Code	Size	PN (BAR)	Temp Range. (°C)*
48020	1/2M X 20	16	0 to 65
48025	3/4M X 25	16	0 to 65
48032	1M X 32	16	0 to 65
48040	1 1/4M X 40	16	0 to 65
48050	1 1/2M X 50	16	0 to 65
48063	2M X 63	16	0 to 65



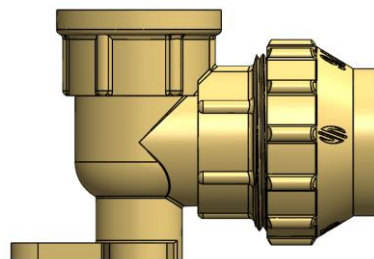
Code	Size	PN (BAR)	Temp Range. (°C)*
49020	1/2F X 20	16	0 to 65
49025	3/4F X 25	16	0 to 65
49032	1F X 32	16	0 to 65
49040	1 1/4F X 40	16	0 to 65
49050	1 1/2F X 50	16	0 to 65
49063	2F X 63	16	0 to 65



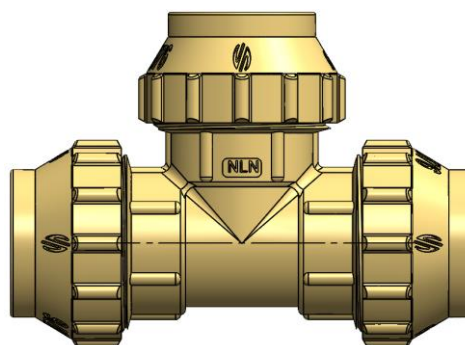
* Freezing is excluded



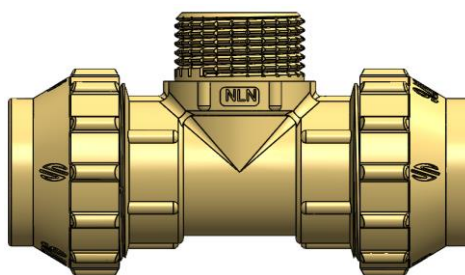
Code	Size	PN (BAR)	Temp Range. (°C)*
53020	1/2F X 20	16	0 to 65
53025	3/4F X 25	16	0 to 65
53032	1F X 32	16	0 to 65



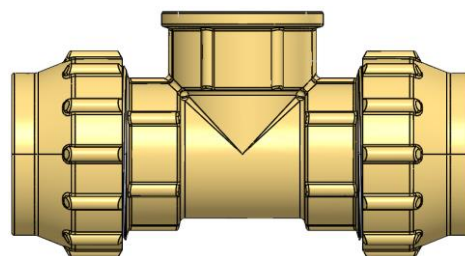
Code	Size	PN (BAR)	Temp Range. (°C)*
50020	20 X 20 X 20	16	0 to 65
50025	25 X 25 X 25	16	0 to 65
50032	32 X 32 X 32	16	0 to 65
50040	40 X 40 X 40	16	0 to 65
50050	50 X 50 X 50	16	0 to 65
50063	63 X 63 X 63	16	0 to 65



Code	Size	PN (BAR)	Temp Range. (°C)*
52020	20 X 1/2M X 20	16	0 to 65
52025	25 X 3/4M X 25	16	0 to 65
52032	32 X 1M X 32	16	0 to 65



Code	Size	PN (BAR)	Temp Range. (°C)*
51020	20 X 1/2F X 20	16	0 to 65
51025	25 X 3/4F X 25	16	0 to 65
51032	32 X 1F X 32	16	0 to 65
51040	40 X 1 1/4F X 40	16	0 to 65
51050	50 X 1 1/2F X 50	16	0 to 65
51063	63 X 2F X 63	16	0 to 65

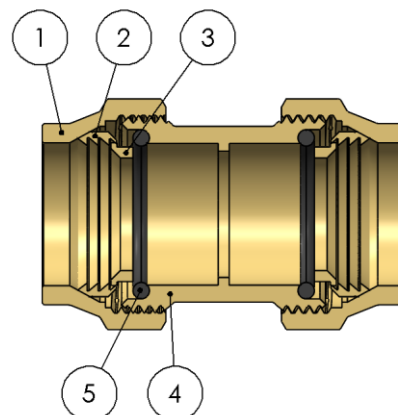


*Freezing is excluded



MATERIALS

Item	Component	Material	Finishing
1	Nut	Brass CW617N	Brass color
2	Bicone	Brass CW617N	Brass color
3	Washer	Brass CW617N	Brass color
4	Body	Brass CW617N	Brass color
5	O-ring	NBR	-



Compatibility with fluids

Fluid	Compatibilidad
Drinking water	Excellent

For any other fluid, please contact Arco technical Service

INSTALLATION INSTRUCTIONS

Shut off the water supply at the facility before taking any action.

Before proceeding with the assembly of the fitting, the PE pipe must be properly prepared so that it has a straight cut and is free of burrs or other elements that may damage the O-ring during assembly, as well as that the outer part is clean, without traces of other materials and without superficial damage. Make sure that there is no dirt or foreign element inside the tubes.

It is recommended to wet the external part of the tube on which the fitting is mounted, to facilitate this process. Special care must be taken to position the bicone correctly with the saw teeth in the opposite direction to the removal of the tube from the fitting.

Restore the water supply and check the tightness of all connections before putting the installation in service.



Every product has an environmental impact during its life cycle, even after it has been removed from use. All components of this product can be recycled, deposit the valve at a recycling point or green point once it is finished use. Valves Arco reserves the right to change the product or its technical specifications without prior notice.

FT80030ING – Edition 2024-12